

# Oxford High – Ada Benson Building Oxford



Architects: Ellis Williams Architects

Installation Contractor: Craft Interiors

Products: Topakustik 29/3M

Finish: American White Oak

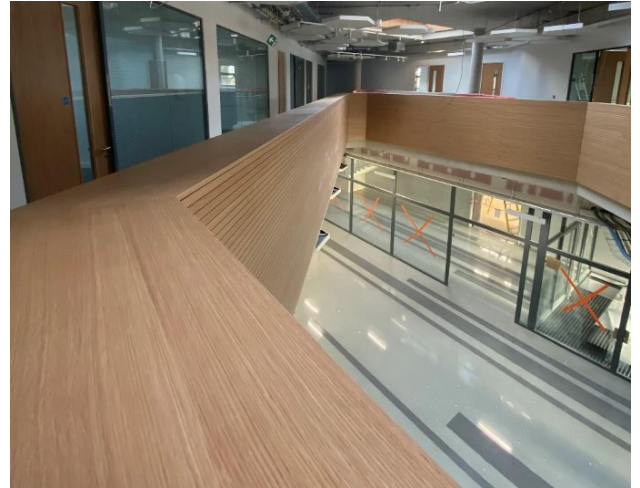
Completed: Spring 2020

Photographer: supplied by Ellis Williams Architects

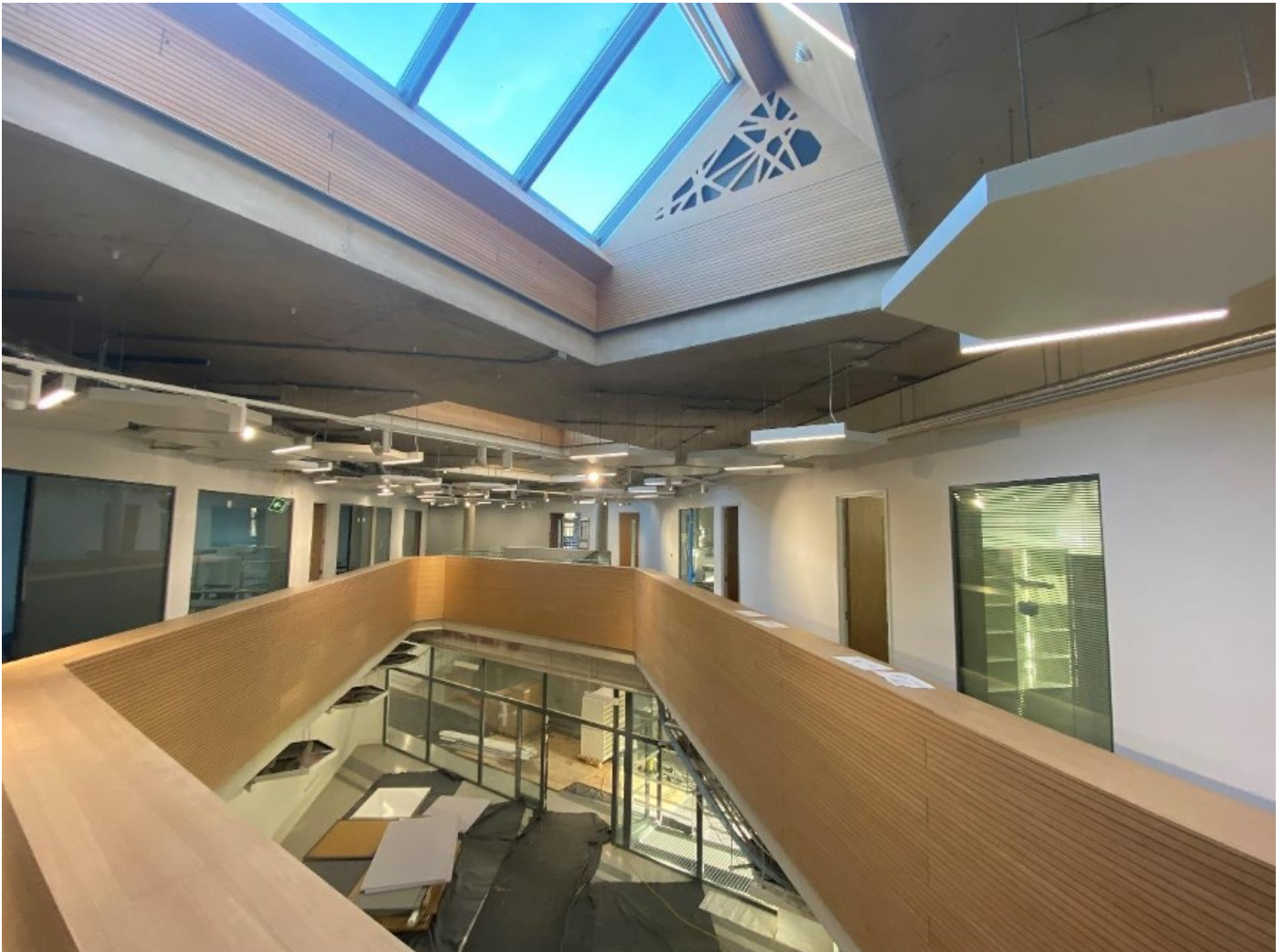
## PROJECT INFORMATION

The Ada Benson Centre for Sixth Form and the Arts opened March 2020. Designed by the experienced Ellis Williams Architects and installed by Craft Interiors.

The Topakustik 29/3M (aw 0.65, Absorption Class C, NRC 0.73) system has been utilised to assist the foyer, atria and circulation system to combat Sound Propagation, Reverberation and Sound Pressure levels in line with the Building Bulletin 93.



## PROJECT IMAGES



# Oxford High – Ada Benson Building Oxford



## ACOUSTIC PRODUCT SYSTEM USED

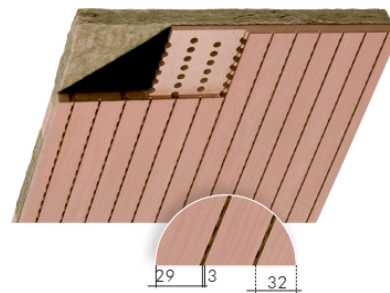
### TOPAKUSTIK® type 29/3 M - data sheet

TOPAKUSTIK® type 29/3 - the popular type

This very popular and frequently used groove type combines beautiful design and good noise absorption. This product is able to achieve a very good effect as a ceiling element also in the low frequency range.



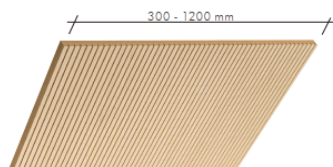
**Planks**  
Thanks to the precise tongue and groove connection, planks result in an attractive surface with a joint-free appearance, because the connecting joint matches the dimension of the grooves. The planks permit simple and flexible assembly. They can be installed by stapling to a timber batten or clamping to a T-bar with TOPAKUSTIK® clips.



Fire Category B2 (CH 4.3)/D-s2, d0			Fire Category B1 (CH 5.3)/B-s2, d0			Fire Category A2 (CH 6q.3)	
Paint 16 mm	Wood Veneer 17 mm	Melamine 16 mm	Paint 16 mm	Wood Veneer 17 mm	Melamine 16 mm	Paint 16 mm	Wood Veneer 17 mm
Standard							
2780 x 128	2780 x 128	2780 x 128	2780 x 128	2780 x 128	2780 x 128		
3640 x 128	3640 x 128			3640 x 128			
4080 x 128		4080 x 128	4080 x 128		4080 x 128		
custom lengths are also available							

symbols

- Paint
- Wood veneer
- Melamine

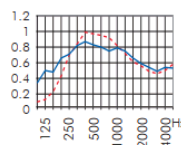


**Panels**  
Panels are used for removable or fixed ceilings and walls with visible joints. Panels can be provided with a number of different edges and are also suited for cabinet fronts and room dividers.

Fire Category B2 (CH 4.3)/D-s2, d0			Fire Category B1 (CH 5.3)/B-s2, d0			Fire Category A2 (CH 6q.3)	
Paint 16 mm	Wood Veneer 17 mm	Melamine 16 mm	Paint 16 mm	Wood Veneer 17 mm	Melamine 16 mm	Paint 16 mm	Wood Veneer 17 mm
max.							
3640 x 1216	3640 x 1216	3640 x 1216	3640 x 1216	3640 x 1216	3640 x 1216		
ideal = means optimal use of MDF core - custom lengths are also available							
2040 x 992 / 640	2040 x 992 / 640	2040 x 992	2040 x 992	2040 x 992	2040 x 992		
2780 x 992 / 640	2780 x 992 / 640	2780 x 992	2780 x 992	2780 x 992	2780 x 992		
3640 x 640	3640 x 640			3640 x 640			

sound absorption values

29/3 M-6%



Graphics: Sound absorption in suspension on height 215 mm and 55 mm.

If you would like further information or have any questions please do not hesitate to get in contact:

Address: 70c High Street, Whitstable, CT5 1BB

Telephone: 01227 281140

Email: [enquiries@acoustic-products.co.uk](mailto:enquiries@acoustic-products.co.uk)

Website: <https://www.acoustic-products.co.uk/>