

Deloitte Office London

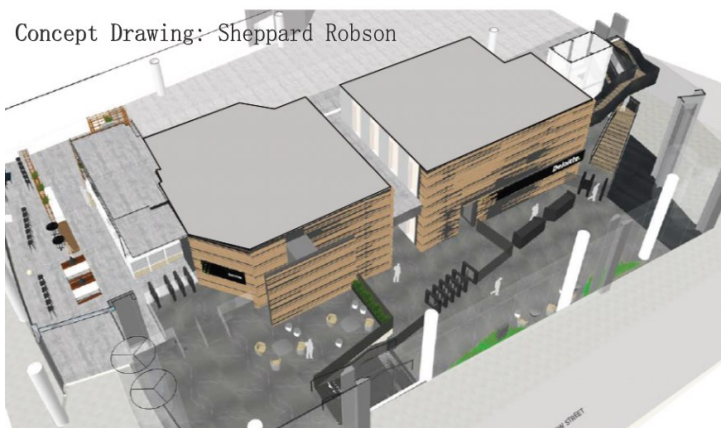


Architects: Sheppard Robson
Main Contractor: BW Workspace
Joinery Contractor: James Johnson
Products: Laudescher LINEA Bespoke
Finish: Pine with a bespoke finish
Completed: Summer 2018

PROJECT INFORMATION

This exciting installation designed by Sheppard Robson incorporated a bespoke Laudescher LINEA (aw 0.85, Absorption Class B, NRC 0.9) slatted panel with the purpose of managing the reflective nature of the walls within this main entrance area.

The internal construction was undertaken by BW Workspace and installed by James Johnson. Using this Laudescher system will assist in creating a comfortable work environment to absorb sounds and reduce the reflection to increase the calming effect of the area. Speech intelligibility will increase along with lowering the sound pressure levels.



PROJECT IMAGES



ACOUSTIC PRODUCTS SYSTEM USED



Lauder LINEA

MUR 2-4.4-12.AL - 1590x1400 A

Product references		2.4.3	2.4.5	2.4.6
Slat section	Facing side	20 mm	20 mm	20 mm
	Thickness	42 mm	42 mm	42 mm
Spacing between slats		34.54 mm	55 mm	65.71 mm
Slat distance		54.54 mm	75 mm	85.71 mm
Total thickness		69 mm	69 mm	69 mm
Average void area		63%	73%	77%
Sound absorption data α_w^* / absorption class		0.85 / B	0.85 / B	0.85 / B
Reaction to fire		B-s1,d0 / B-s2,d0 / D-s1,d0**		
Installation system		Direct mechanical fixing		

*Test report, panel with insertion of mineral or stone wool tiles with black fleece facing

** In accordance with the provisions of article AM4 (French regulation) "Vertical walls of unprotected open spaces and buildings" §2, taken from "Fire safety regulations for buildings open to the public"

Edging system:



Weight in Kg/m ²	2.4.3	2.4.5	2.4.6
Pine	12.4	9.5	8.5
Douglas Fir	12.2	9.4	8.45
Oak	15.9	12.05	10.8

If you would like further information or have any questions please do not hesitate to get in contact:

Address: 70c High Street, Whitstable, CT5 1BB

Telephone: 01227 281140

Email: enquiries@acoustic-products.co.uk

Website: <https://www.acoustic-products.co.uk/>