

# Southampton University (Gower) - Reception Southampton



Architects: Chris Dyson Architects  
Main Contractor: BAM Construction  
Joinery Contractor: Ridon Joinery  
Products: Topakustik 28-4 M  
Finish: Oak  
Completed: Winter 2019  
Photographer: supplied by Ridon Joinery

## PROJECT INFORMATION

The University of Southampton – Gower South is a seven storey teaching and learning centre, with associated offices and lecture theatres.

Acoustic Products were selected for various spaces within the project. Here in the reception area our Topakustik 28-4M was selected due to its technical capabilities when considering the aesthetics and acoustics in this open space. Topakustik 28-4M (aw0.55, Absorption Class D, NRC 0.78) will absorb and diffuse the sound which will benefit the area greatly when considering room acoustics.



## PROJECT IMAGE



# Southampton University (Gower) - Reception Southampton



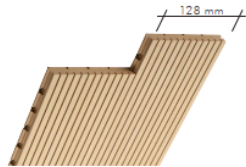
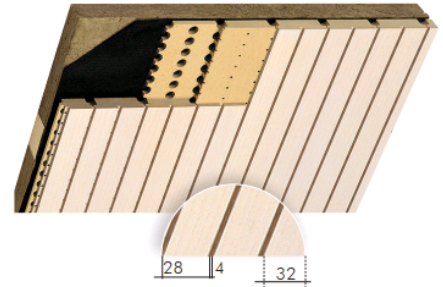
## ACOUSTIC PRODUCT SYSTEM USED

### TOPAKUSTIK® type 28/4 M - data sheet

TOPAKUSTIK® type 28/4- Wide grooving

These grooves are the ideal solution for standard absorption requirements.

As with all center-to-center distances, the „wide“ grooving also comes with grooves of 2mm, 3mm and 4mm.



#### Planks

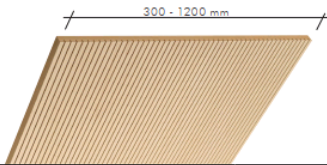
Thanks to the precise tongue and groove connection, planks result in an attractive surface with a joint-free appearance, because the connecting joint matches the dimension of the grooves. The planks permit simple and flexible assembly. They can be installed by stapling to a timber batten or clamping to a T-bar with TOPAKUSTIK® clips.

Fire Category B2 (CH 4.3)/D-s2, d0			Fire Category B1 (CH 5.3)/B-s2, d0			Fire Category A2 (CH 6q.3)	
Paint 16 mm	Wood Veneer 17 mm	Melamine 16 mm	Paint 16 mm	Wood Veneer 17 mm	Melamine 16 mm	Paint 16 mm	Wood Veneer 17 mm
Standard							
2780 x 128	2780 x 128	2780 x 128	2780 x 128	2780 x 128	2780 x 128	3080 x 128	3080 x 128
3640 x 128	3640 x 128		4080 x 128	3640 x 128			
4080 x 128		4080 x 128	4080 x 128		4080 x 128		
custom lengths are also available							

#### symbols

- Paint
- Wood veneer
- Melamine

#### sound absorption values

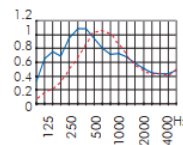


#### Panels

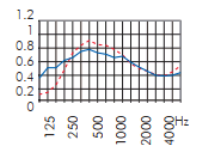
Panels are used for removable or fixed ceilings and walls with visible joints. Panels can be provided with a number of different edges and are also suited for cabinet fronts and room dividers.

Fire Category B2 (CH 4.3)/D-s2, d0			Fire Category B1 (CH 5.3)/B-s2, d0			Fire Category A2 (CH 6q.3)	
Paint 16 mm	Wood Veneer 17 mm	Melamine 16 mm	Paint 16 mm	Wood Veneer 17 mm	Melamine 16 mm	Paint 16 mm	Wood Veneer 17 mm
max.							
3640 x 1216	3640 x 1216	3640 x 1216	3640 x 1216	3640 x 1216	3640 x 1216	3080 x 1216	3080 x 1216
ideal = means optimal use of MDF core - custom lengths are also available							
2040 x 992 / 640	2040 x 992 / 640	2040 x 992	2040 x 992	2040 x 992	2040 x 992	1540 x 608	1540 x 608
2780 x 992 / 640	2780 x 992 / 640	2780 x 992	2780 x 992	2780 x 992	2780 x 992	3080 x 608	3080 x 608
3640 x 640	3640 x 640			3640 x 640			

28/4 M-7.5%



28/4 T



Graphics: Sound absorption in suspension height 215 mm and 55 mm.

If you would like further information or have any questions please do not hesitate to get in contact:

Address: 70c High Street, Whitstable, CT5 1BB

Telephone: 01227 281140

Email: [enquiries@acoustic-products.co.uk](mailto:enquiries@acoustic-products.co.uk)

Website: <https://www.acoustic-products.co.uk/>