

Royal Academy for Deaf Education Exeter



Architects: Stride Treglown

Main Contractor: Midas Construction

Joinery Contractor: Robert P Barry

Products: TOPAKUSTIK - Topperfo 16/16/10-5 & Topperfo Plain

LAUDESCHER - LINEA 4.2.4 & LINEA 4.2.1

Completed: Spring 2020

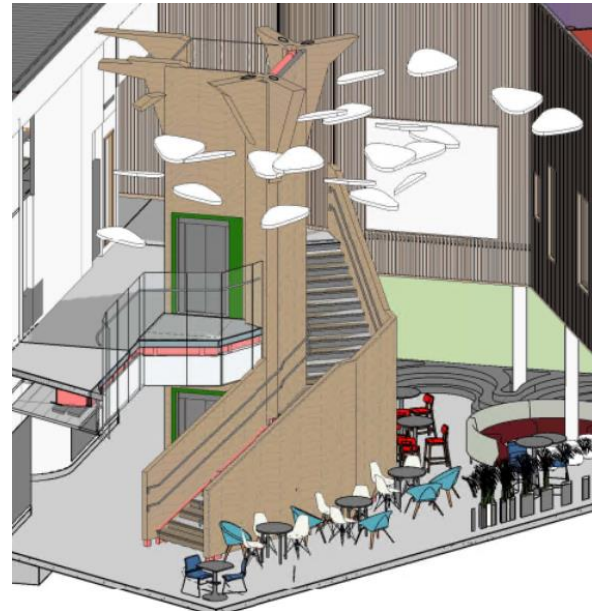
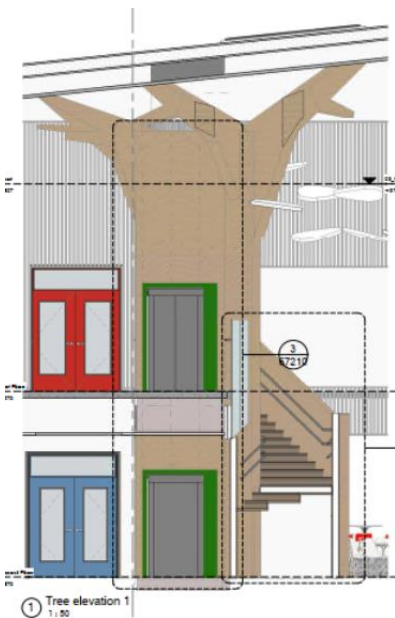
PROJECT INFORMATION

The Deaf Academy in Exeter is a school, college and residential home for deaf young people aged five to twenty-five.

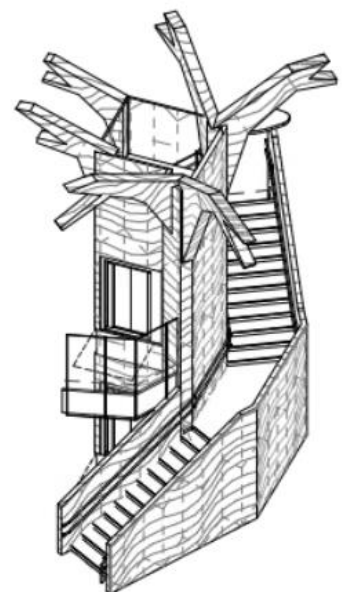
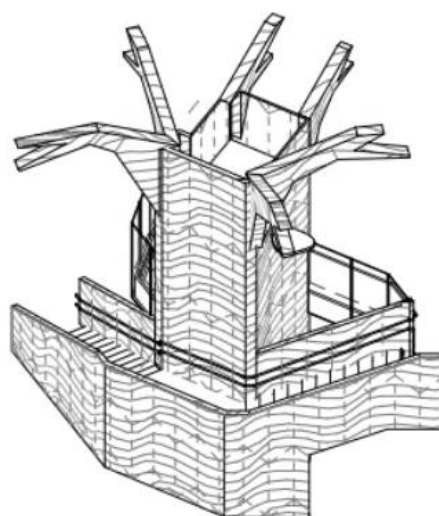
Stride Treglown were initially appointed to develop the scheme for the new build and refurbishment of the existing academy. Works included a new building focusing on education, student accommodation and the refurbishment of the existing theatre on a seven-acre teaching campus.

The new classrooms are located around the 'Learning Forest'. This atrium space is a centre piece for the facility aiming to encourage a more engaging environment away from more traditional teaching spaces. This area is looking to bring in a more natural environment incorporating elements with great natural light whilst utilising our timber acoustic systems.

Midas Construction were awarded the contract to build the £10.5 million project that included classrooms, breakaway spaces, vocational workspace, dining facilities, living areas and a refurbishment of a theatre. Robert P Barry Carpentry based in Plymouth had the responsibility for installing four of our systems – Topakustik's, Topperfo 16/16/10-5 and Topperfo Plain in a Birch Veneer along with our Laudescher LINEA 4.2.4 and 4.2.1 in pine with a white oak wax finish (further product information below).



Project illustrations provided by Stride Treglown.

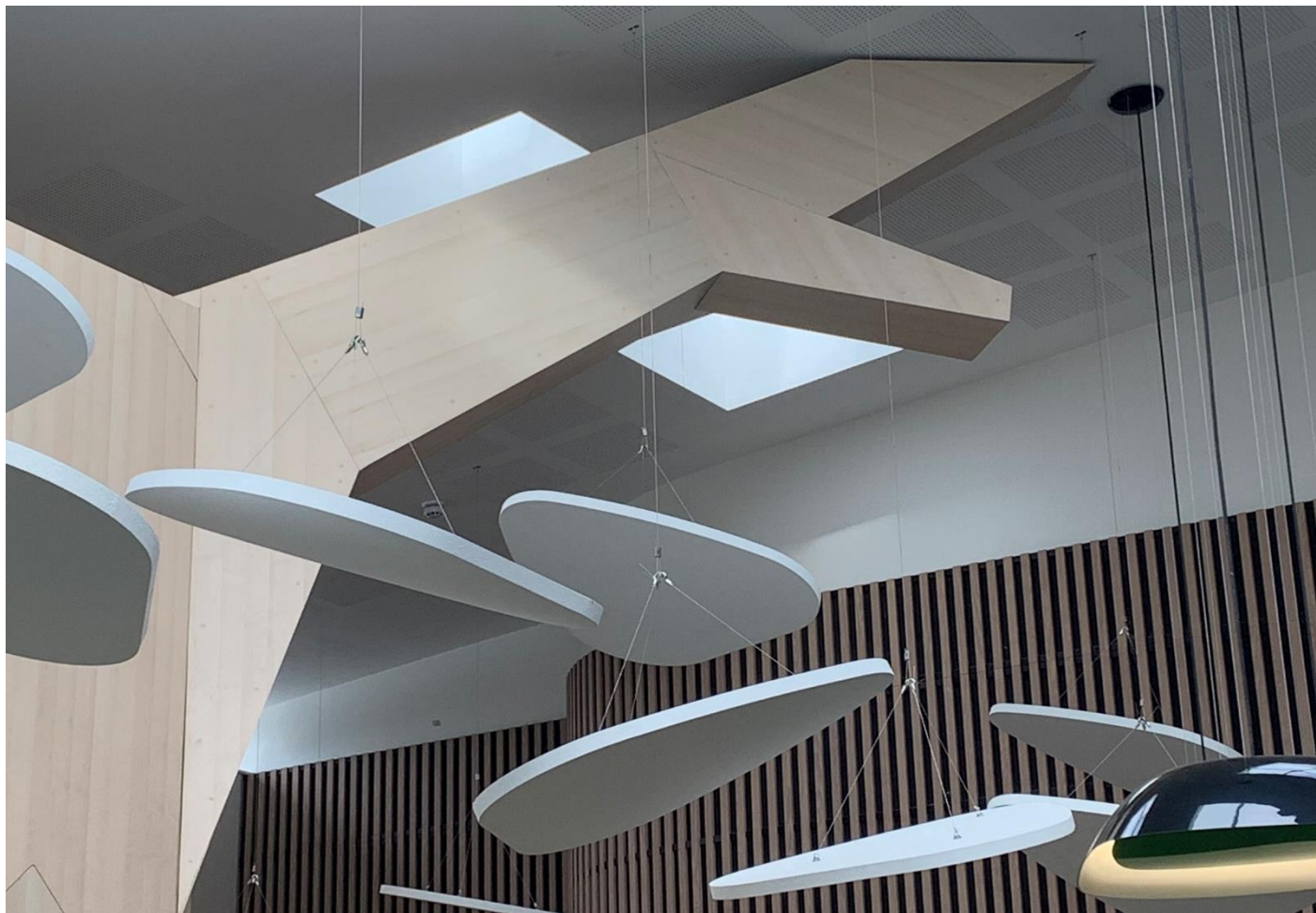


Royal Academy for Deaf Education Exeter



PROJECT IMAGES





ACOUSTIC PRODUCT SYSTEM USED

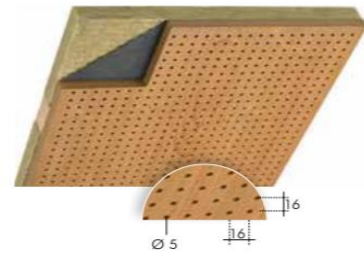
TOPPERFO® type T series - data sheet

TOPPERFO® type T series - discreet and good absorption
Acoustic panel in its tried and tested form, and in all materials and surfaces. Non perforated borders and areas for according to your requirements.

Dimensions and Materials

Core Panel	Fire category B2 (CH 4.3) / D-s2, d0			Fire category B1 (CH 5.3) / B-s2, d0			Fire Category A2 (CH 6q.3)		
	Surface/ thickness	Paint 16 mm	Wood Veneer 17 mm	Melamine 16 mm	Paint 16 mm	Wood Veneer 17 mm	Melamine 16 mm	Paint 16 mm	Wood Veneer 17 mm
Panels	max. in mm	3648 x 1216	3648 x 1216	3648 x 1216	3648 x 1216	3648 x 1216	3648 x 1216	3080 x 1216	3080 x 1216
	ideal: in mm	2032 x 992	2032 x 992	2032 x 992	2032 x 992	2032 x 992	2032 x 992	1540 x 608	1540 x 608
		2780 x 992	2780 x 992	2780 x 992	2780 x 992	2780 x 992	2780 x 992	3080 x 608	3080 x 608
		3648 x 640				3640 x 640			

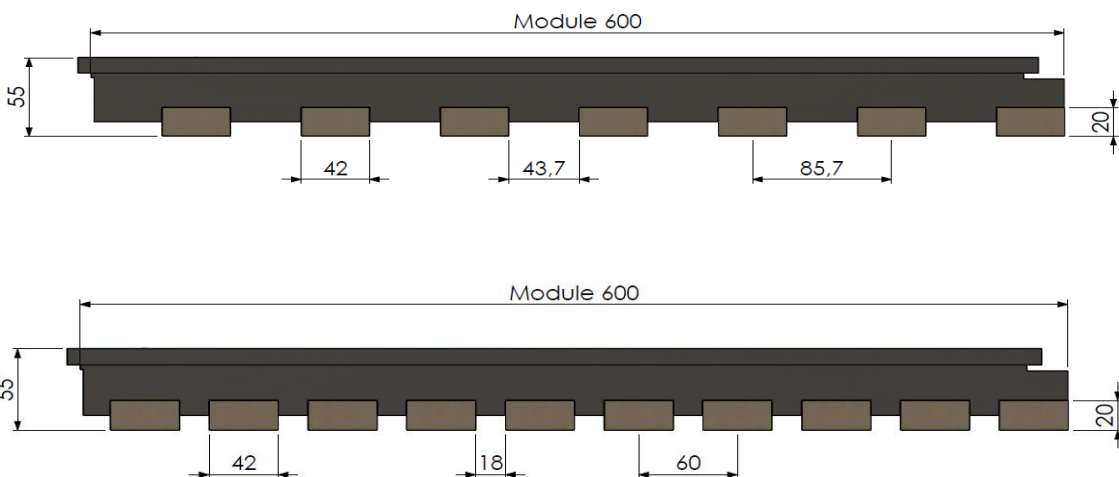
ideal means optimal use of MDF core - custom lengths are also available



symbols

- Paint
- Wood Veneer
- Melamine

LAUDESCHER LINEA



Product references		42.4	42.1
Slat section	Facing side	42 mm	42 mm
	Thickness	20 mm	20 mm
Spacing between slats		43.71 mm	18 mm
Slat distance		85.71 mm	60 mm
Total thickness		55 mm	55 mm
Average void area		51%	30%
Sound absorption data α_w^* / absorption class		0.75 / B	0.5 / D
Reaction to fire		B-s1,d0 / B-s2,d0	
Installation system		T24 main runner with black capping** D/C edge	

*Test report, panel with insertion of mineral or stone wool tiles with black fleece facing

**Moist and/or corrosive environments, cf. grid system manufacturer recommendations

Edging system:



Weight in Kg/m ²	42.4	42.1
Pine	8.75	11.6
Douglas Fir	8.6	11.5
Oak	11	14.8

Royal Academy for Deaf Education Exeter



If you would like further information please do not hesitate to get in contact:

Address: 70c High Street, Whitstable, CT5 1BB

Telephone: 01227 281140

Email: enquiries@acoustic-products.co.uk

Website: <https://www.acoustic-products.co.uk/>