

CTaR Carnegie School of Sport Leeds Beckett University



Architects: Sheppard Robson Architects
Main Contractor: Galliford Try
Fit-Out Contractor: Lynne and Jones
Products: Topakustik 14/2 - Topperfo M 16/16/10
Finish: Factory Spray
Completed: 2020
Photographer: Andrew Heptinstall

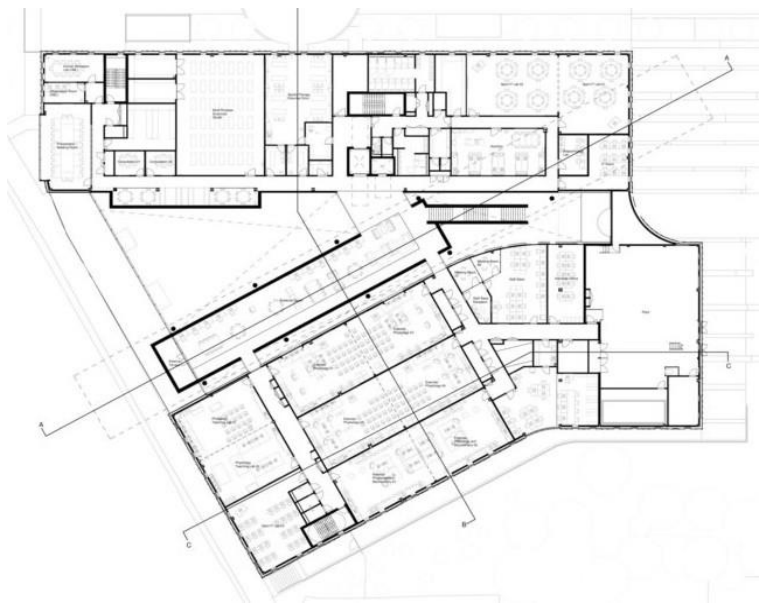
PROJECT INFORMATION

Acoustic Products are proud to work on this £45million state of the art sports facility for undergraduate, postgraduate and research programmes for Leeds Beckett University. The focal point being the 60m indoor running track.

Wonderfully designed by the award-winning Sheppard Robson who designed the singular facility which was previously located across five was constructed by Galliford Try.

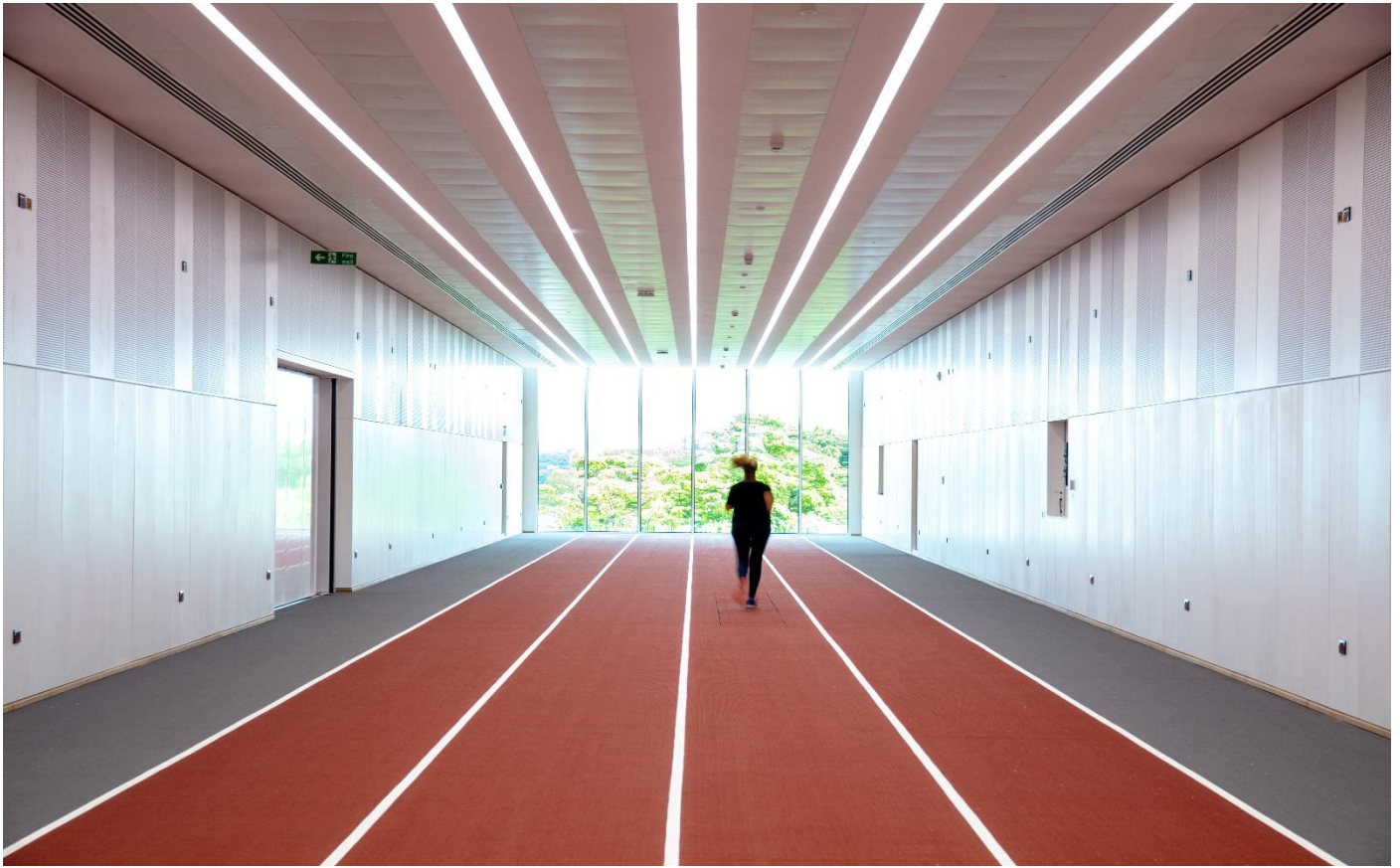
Lynne and Jones installed two systems in three sections of this build; Topakustik 14/2 (aw 0.90, Absorption Class A, NRC 0.89) was installed to the atrium area and gym whilst the Topperfo M 16/16/10 (aw 1, Absorption Class A, NRC 0.96) was installed to the state of the art 60M indoor running track.

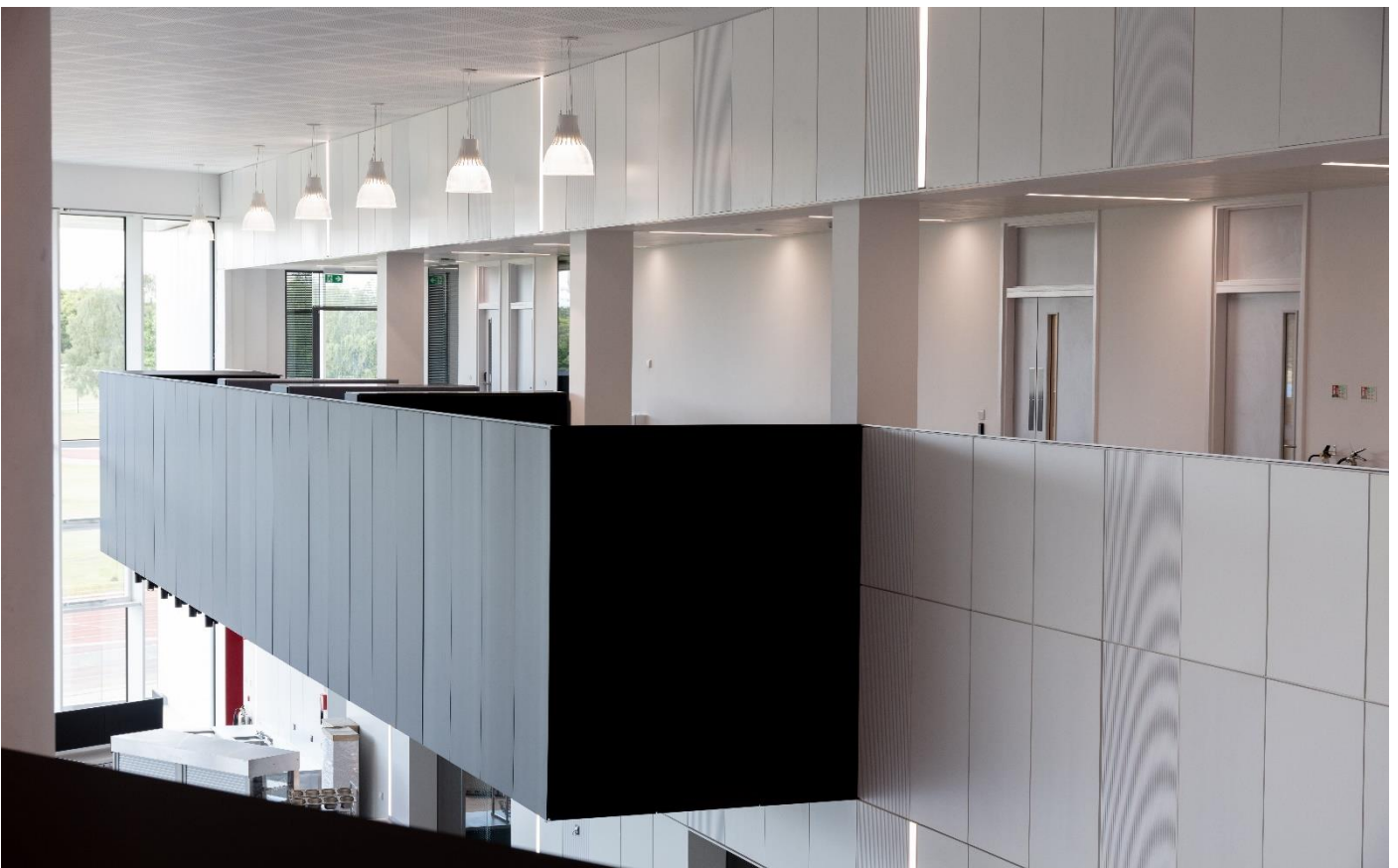
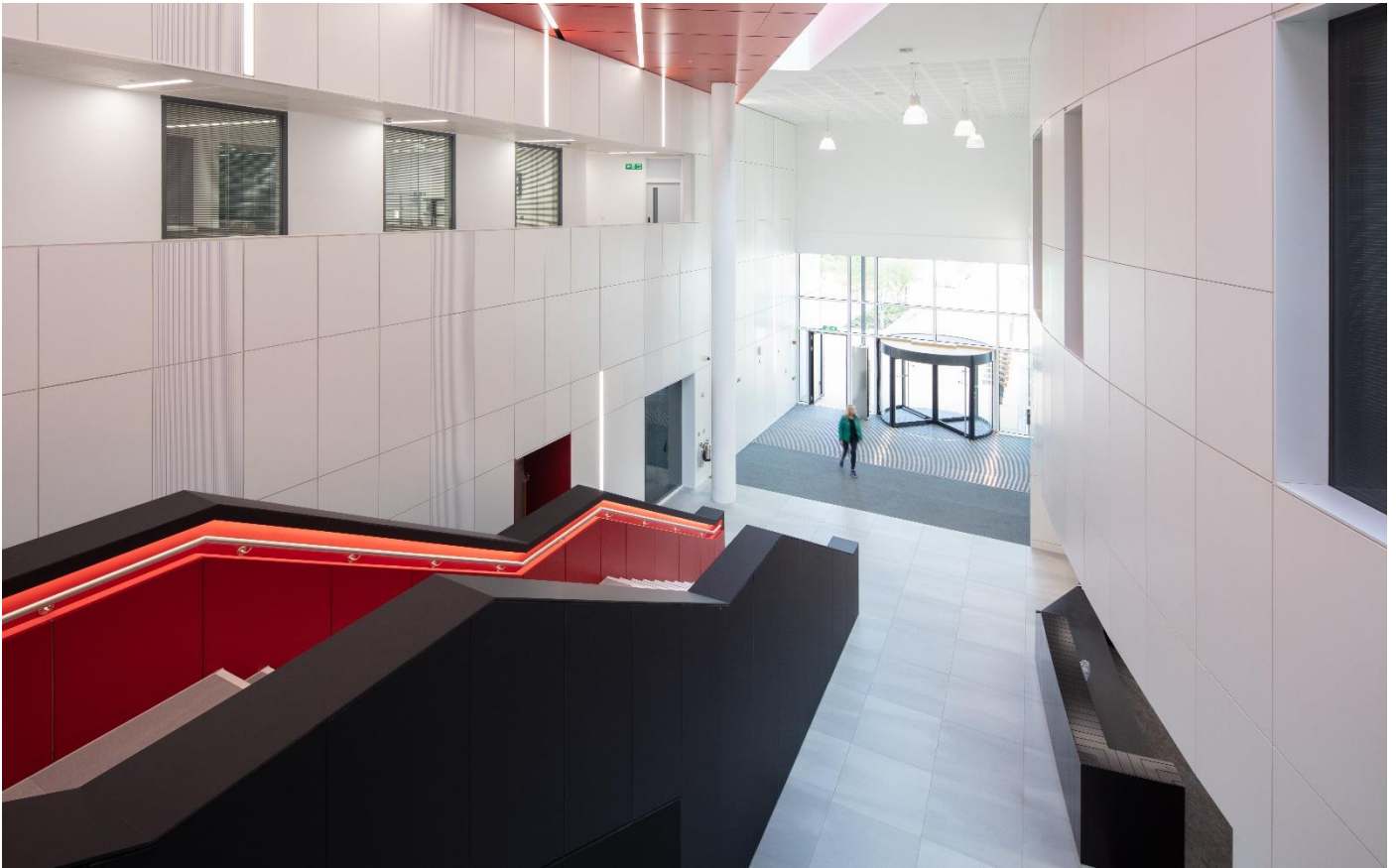
Both systems will help create that calmness needed to compete and provide optimal environment wellness. The sound absorbing properties will aid communication for coaches, tutors, students and athletes.



PROJECT IMAGES

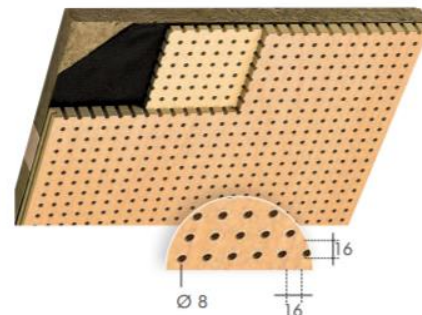






TOPPERFO® - TYPE M SERIES - DATA SHEET

TOPPERFO® type M series - In tried and tested form
Acoustic panel in its tried and tested form, as well as in all materials and surfaces,
non-perforated borders and areas for cutouts according to your requirements.



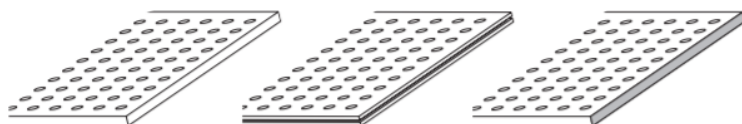
Dimensions and Materials

not fire rated D-s2,d0 (DIN B2)			fire retardant B-s2,d0 (DIN B1)			non-flammable	
Paint 16 mm	Wood Veneer 17 mm	Melamine 16 mm	Paint 16 mm	Wood Veneer 17 mm	Melamine 16 mm	Paint 16 mm	Wood Veneer 17 mm
max. in mm 3648 x 1216	max. in mm 3648 x 1216	max. in mm 3648 x 1216	max. in mm 3648 x 1216	max. in mm 3648 x 1216	max. in mm 3648 x 1216	max. in mm 3080 x 1216	max. in mm 3080 x 1216
ideal: in mm 2032 x 992	ideal: in mm 2032 x 992	ideal: in mm 2032 x 992	ideal: in mm 2032 x 992	ideal: in mm 2032 x 992	ideal: in mm 2032 x 992	ideal: in mm 1540 x 608	ideal: in mm 1540 x 608
2780 x 992	2780 x 992	2780 x 992	2780 x 992	2780 x 992	2780 x 992	2540 x 608	2540 x 608
3648 x 640	3648 x 640			3640 x 640		3080 x 608	3080 x 608

ideal means optimal use of MDF core - custom legths are also available

Sound absorption data acc. to ISO 354
Suspension height 226 and 66 mm
with acoustic fleece and Mineral wool 30 mm (60 kg/m³)

Edges



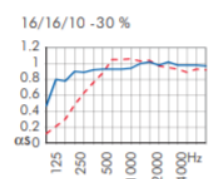
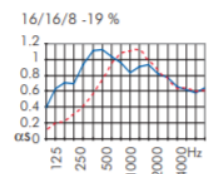
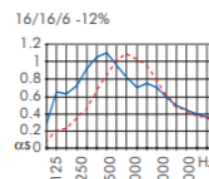
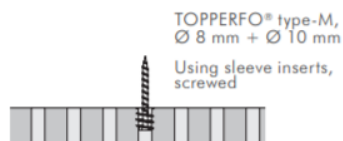
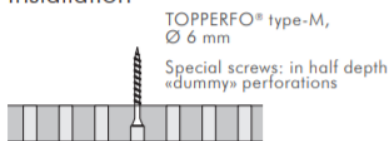
clean cut

with surrounding groove and tongue

visible edge

...or according to your specifications

Installation



If you would like further information or have any questions please do not hesitate to get in contact:

Address: 70c High Street, Whitstable, CT5 1BB

Telephone: 01227 281140

Email: enquiries@acoustic-products.co.uk

Website: <https://www.acoustic-products.co.uk/>