

University of Roehampton - Library Roehampton

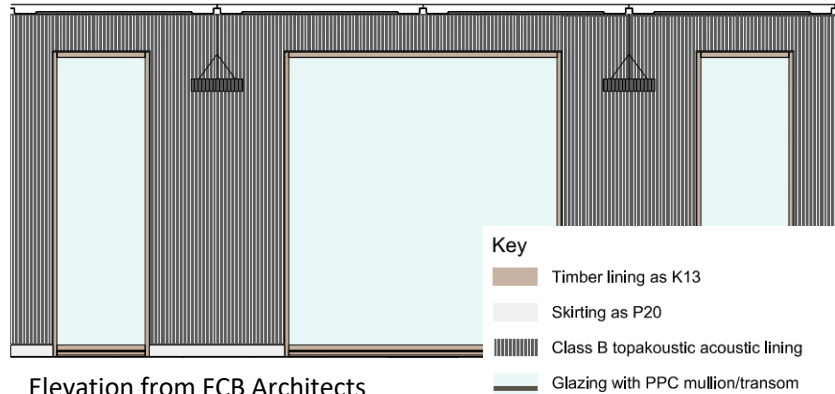


Architects: Fielden Clegg Bradley Architects
Acoustic Engineer: BDP
Main Contractor: Osbourne
Joinery Contractor: WJL Contracts
Products: Topakustik 14/2 M Planks
Finish: RAL 9010
Completed: 2017

PROJECT INFORMATION

The award-winning project designed by Fielden Clegg Bradley situated at the heart of Roehampton's University boasts a fantastic Library setting for its students and lecturers.

Working to BDP acoustic departments design the project boasts the Topakustik 14/2M (aw – 0.90, Absorption Class A, NRC – 0.89) with a factory finished RAL 9010.



Elevation from FCB Architects

Expertly installed by WJL Contracts on behalf of Osbourne. The Topakustik plank will help combat the reverberant noise, lower sound pressure levels and assist with speech intelligibility creating the optimal environment for the students to thrive in.

PROJECT IMAGES



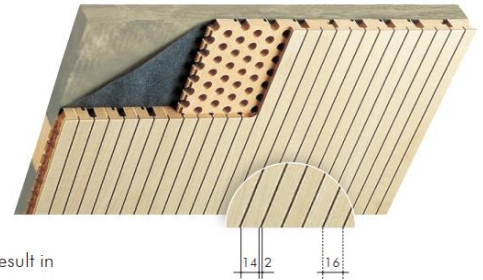




ACOUSTIC PRODUCT SYSTEM USED

TOPAKUSTIK® Type 14/2 M

The most popular TOPAKUSTIK types. High sound absorption combined with easy assembly. The grooving is visible even from a long distance.

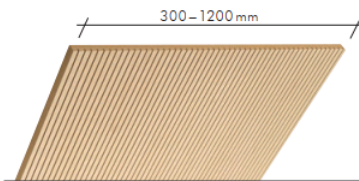


Planks

Thanks to the precise tongue and groove connection, planks result in an attractive surface with a joint-free appearance, because the connecting joint matches the dimension of the grooves. The planks permit simple and flexible assembly. They can be installed by stapling to a timber batten or clamping to a T-bar with TOPAKUSTIK clips.

not fire rated D-s2,d0 (DIN B2)			fire retardant B-s2,d0 (DIN B1)			non-flammable	
Paint 16 mm	Wood Veneer 17 mm	Melamine 16 mm	Paint 16 mm	Wood Veneer 17 mm	Melamine 16 mm	Paint 16 mm	Wood Veneer 17 mm
Standard							
2780 × 128	2780 × 128 3640 × 128	2780 × 128	2780 × 128	2780 × 128 3640 × 128	2780 × 128	2540 × 128 3080 × 128	2540 × 128 3080 × 128
4080 × 128		4080 × 128	4080 × 128		4080 × 128		
custom lengths are also available							

Sound absorption data acc. to ISO 354
Suspension height 226 and 66 mm
with acoustic fleece and Mineral wool 30 mm (60 kg/m³)



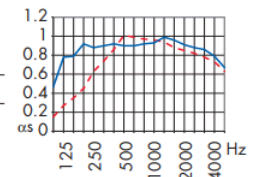
Panels

Panels are used for removable or fixed ceilings and walls with visible joints. Panels can be provided with a number of different edges and are also suited for cabinet fronts and room dividers.

not fire rated D-s2,d0 (DIN B2)			fire retardant B-s2,d0 (DIN B1)			non-flammable	
Paint 16 mm	Wood Veneer 17 mm	Melamine 16 mm	Paint 16 mm	Wood Veneer 17 mm	Melamine 16 mm	Paint 16 mm	Wood Veneer 17 mm
maximal							
4080 × 1216	3640 × 1216	4080 × 1216	4080 × 1216	3640 × 1216	4080 × 1216	3080 × 1216	3080 × 1216
ideal = means optimal use of MDF core – custom lengths are also available							
2040 × 992/640	2040 × 992/640	2040 × 992/640	2040 × 992/640	2040 × 992/640	2040 × 992/640	1540 × 608	1540 × 608
2780 × 992/640	2780 × 992/640	2780 × 992/640	2780 × 992/640	2780 × 992/640	2780 × 992/640	2540 × 608	2540 × 608
3640 × 640	3640 × 640			3640 × 640		3080 × 608	3080 × 608

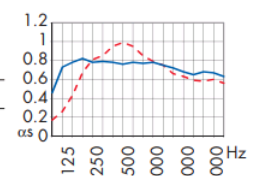
14/2 M-7%

α _w	Euro	NRC
0.90	A	0.89
0.85	B	0.86



14/2 M-3.5%

α _w	Euro	NRC
0.75 L	C	0.74
0.65 UM	C	0.79



If you would like further information or have any questions please do not hesitate to get in contact:

Address: 70c High Street, Whitstable, CT5 1BB

Telephone: 01227 281140

Email: enquiries@acoustic-products.co.uk

Website: <https://www.acoustic-products.co.uk/>